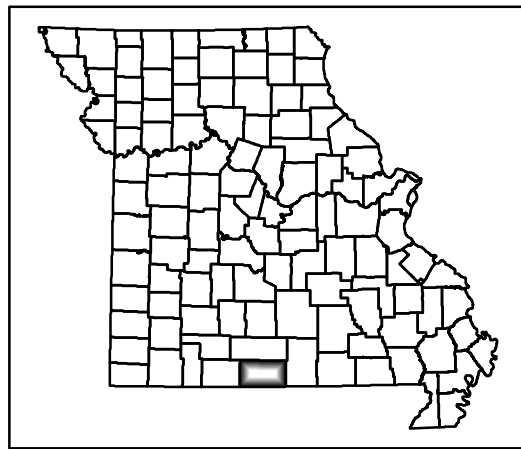
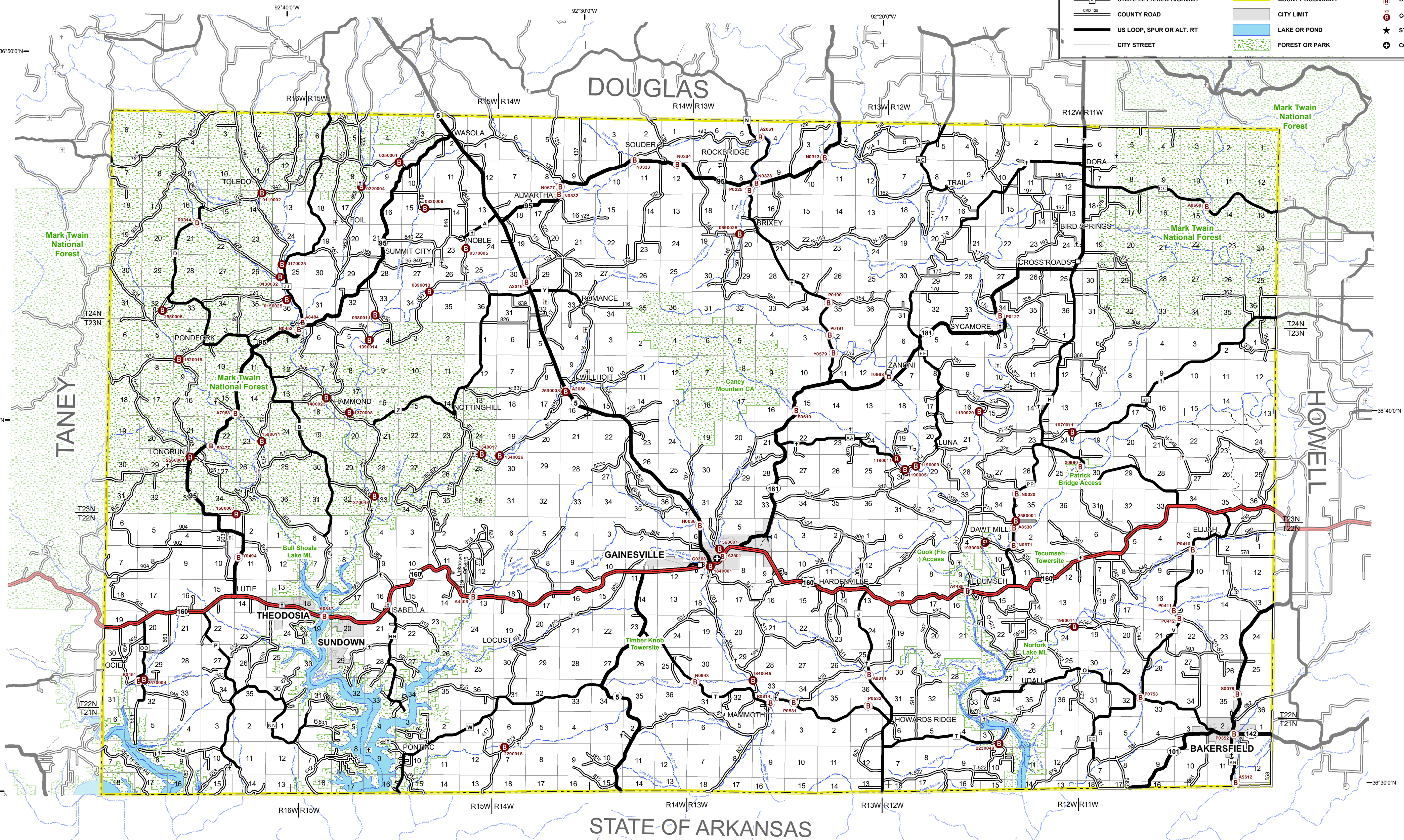


	INTERSTATE		PRIVATE OR OTHER ROAD		AIRPORT
	INTERSTATE LOOP		KATY TRAIL		HOSPITALS
	US HIGHWAY		RAILROAD		CEMETERY
	US HIGHWAY (DIVIDED)		RIVER OR STREAM		OTHER CITIES AND TOWNS
	STATE NUMBERED HIGHWAY		SECTION LINE		MODOT SHED
	STATE LETTERED HIGHWAY		COUNTY BOUNDARY		STATE BRIDGE (STRUCTURE ID)
	COUNTY ROAD		CITY LIMIT		COUNTY BRIDGE (STRUCTURE ID)
	US LOOP, SPUR OR ALT. RT.		LAKE OR POND		STATE CAPITOL
	CITY STREET		FOREST OR PARK		COUNTY SEAT



GENERAL HIGHWAY MAP
OZARK COUNTY
*Prepared by MoDOT
Transportation Planning Division*

County No.
77
SE
District

Scale
0 1 2 3 4 Miles

Revised - August 2021